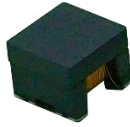
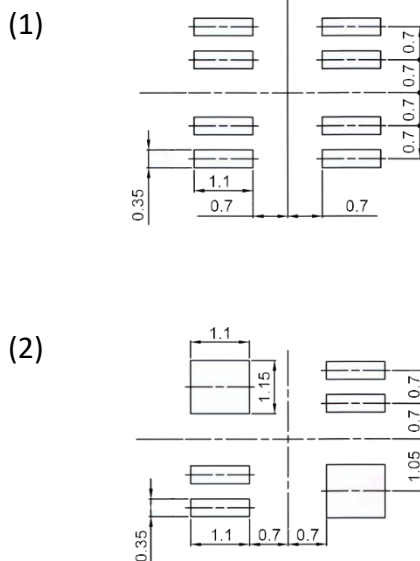


FAT3232T-151-G1



RECOMMEND LAND PATTERN



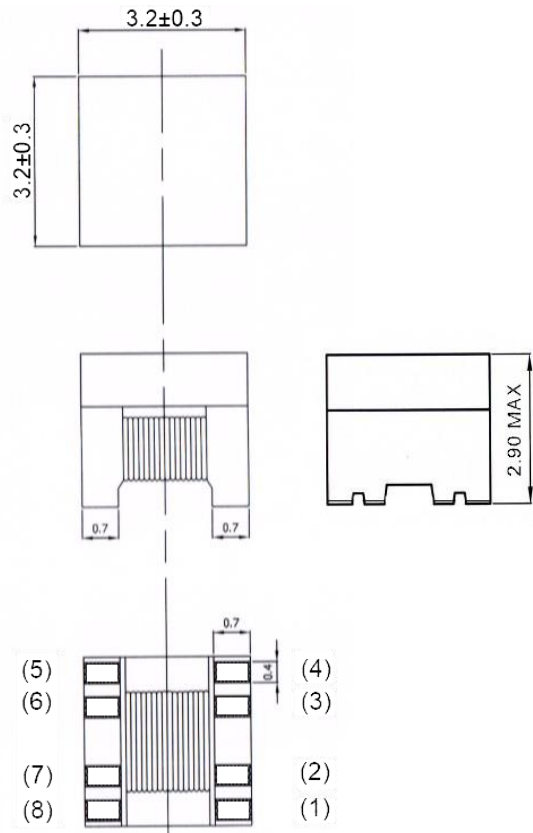
FEATURES

Fully automated production lines
Compatible with 10 BASE-T, 100BASE-TX, and 1000BASE-T
IEEE 802.3 Ethernet compatible
RoHS compliant

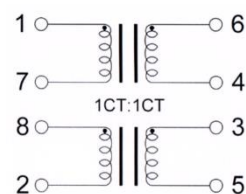
APPLICATIONS

Servers, Switches, Routers, IP cameras
Network devices and communication equipment
Industrial computers
Digital consumer electronics

SHAPE AND DIMENSIONS (mm)



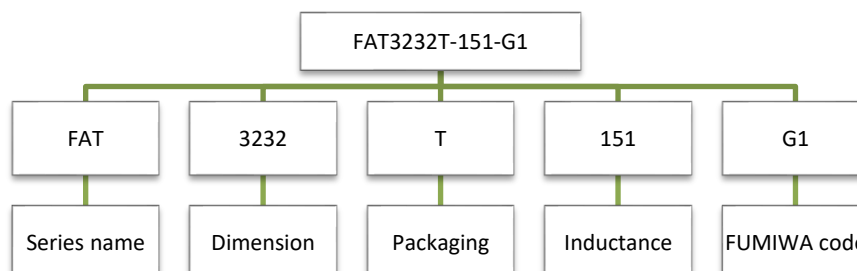
SCHEMATIC DIAGRAM



RATING

Operating temperature range: -40 to 85°C
Storage temperature range: 20 to 25°C
R.H. 65% (For Reference)

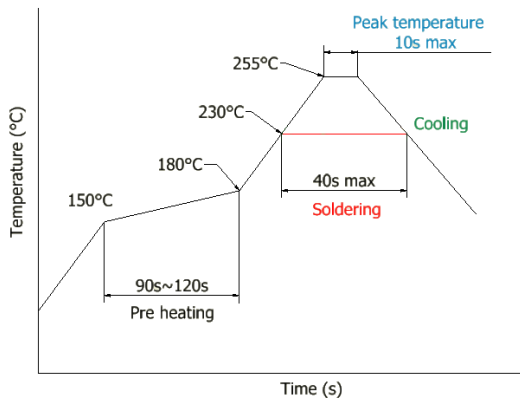
PRODUCT IDENTIFICATION (ex.)



ELECTRICAL CHARACTERISTICS

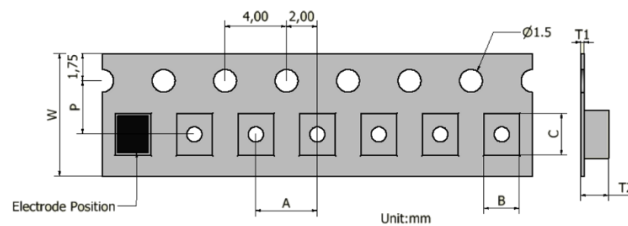
Part No.	Inductance [DC bias 8mA, 100KHz] Pin(1)(2) → short(7)(8) Pin(5)(6) → short(3)(4) (μH)Min.	Insertion loss [0.1 to 100MHz] (dB)Max.	Inter-winding capacitance [100KHz] (pF)Max.	Turn ratio	Hi-pot (Vrms) 60sec.
FAT3232T-151-G1	150	2.5	25	1CT:1CT	1500

RECOMMENDED SOLDERING CONDITIONS



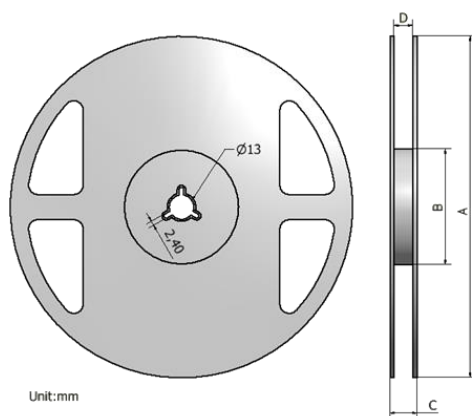
PACKAGE

(1) Taping specifications



Type	W	P	A	B	C	T1	T2
FAT3232	12±0.2	5.5±0.05	8.0±0.1	3.45±0.1	3.45±0.1	0.20±0.05	3.20±0.1

(2) Reel specifications

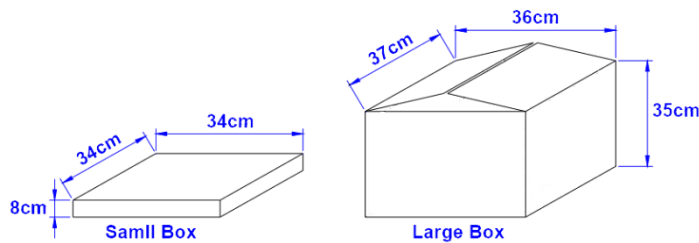


Label

Pulse Transformers
FAT3232T-151-G1
2,000 PCS
Lot No. _____
FUMIWA TECHNICAL CO., LTD.

Type	A	B	C	D	Q'ty/Reel
FAT3232	330±1.5	75±2.0	18±0.5	13±0.5	2,000

(3)Box package



Size	Reels in Small Box	Small Box in Large Box
FAT3232	4	4

Note:

1. Please make sure that your product is has been evaluated and confirmed against your specifications when our product is mounted to your product.
2. Do not knock nor drop.
3. All the items and parameters in this product specification have been prescribed on the premise that our product is used for the purpose,under the condition and in the environment agreed upon between you and us. You are requested not to use our product deviating from such agreement.
4. Please keep the distance between transformer/coil and other components (refer to the standard IEC 950)