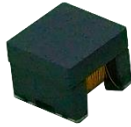
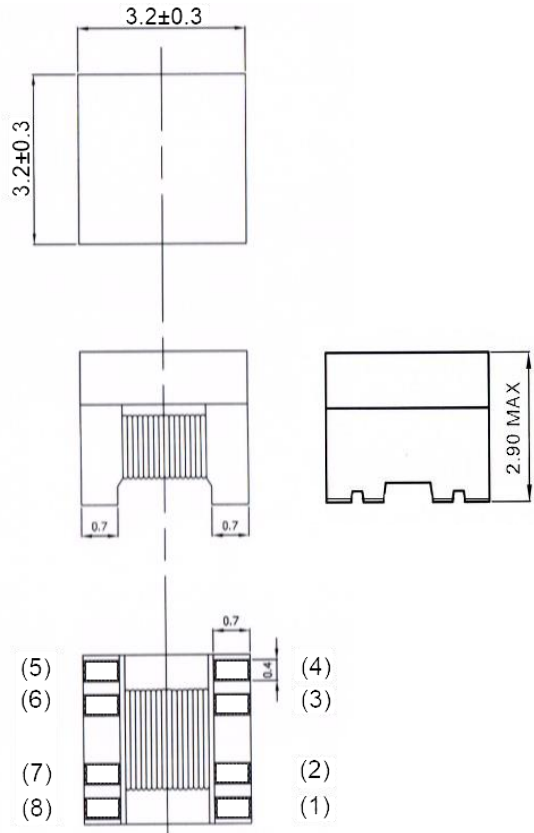


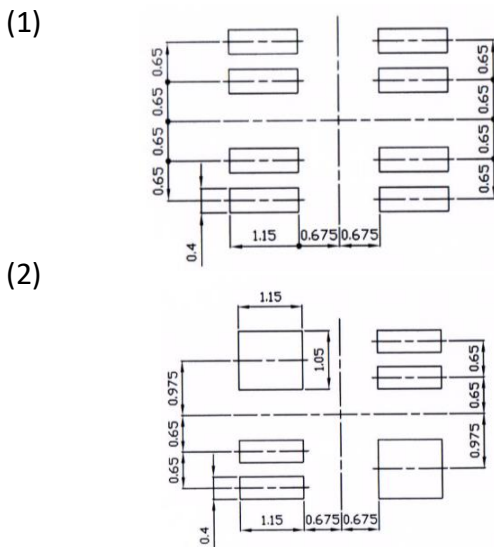
FAT3232



SHAPE AND DIMENSIONS (mm)



RECOMMEND LAND PATTERN



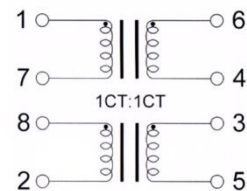
FEATURES

Fully automated production lines
 Compatible with 10 BASE-T, 100BASE-TX, and 1000BASE-T
 RoHS compliant

APPLICATIONS

Servers, Switches, Routers, IP cameras
 Network devices and communication equipment
 Industrial computers
 Digital consumer electronics

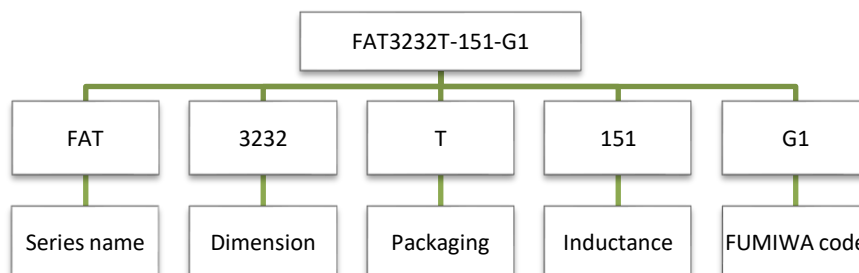
SCHEMATIC DIAGRAM



RATING

Operating temperature range: -40 to 85°C
 Storage temperature range: 20 to 25°C
 R.H. 65% (For Reference)

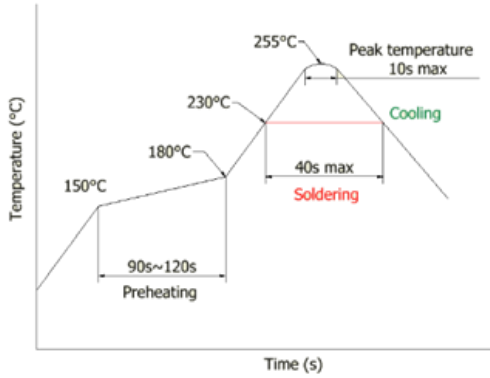
PRODUCT IDENTIFICATION (ex.)



ELECTRICAL CHARACTERISTICS

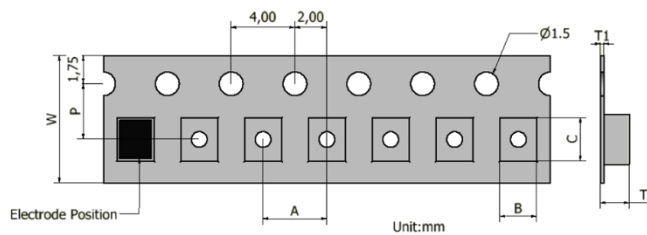
Part No.	Inductance [DC bias 8mA, 100KHz] Pin(1)(2) · short(7)(8) Pin(5)(6) · short(3)(4) (μ H)Min.	Insertion loss [0.1 to 100MHz] (dB)Max.	Inter-winding capacitance [100KHz] (pF)Max.	Turn ratio
FAT3232T-151-G1	150	2.5	25	1CT:1CT

RECOMMENDED SOLDERING CONDITIONS



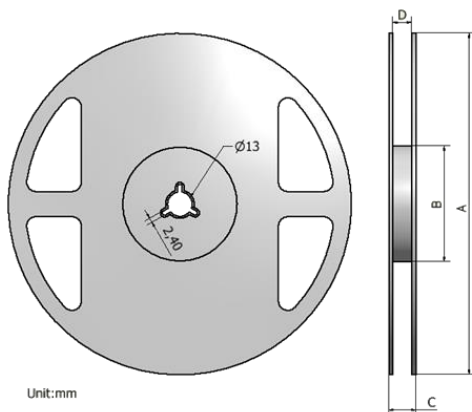
PACKAGE

(1) Taping specifications



Type	W	P	A	B	C	T1	T2
FAT3232	12 \pm 0.2	5.5 \pm 0.05	8.0 \pm 0.1	3.45 \pm 0.1	3.45 \pm 0.1	0.20 \pm 0.05	3.20 \pm 0.1

(2) Reel specifications



Label

Pulse Transformers
 FAT3232T-151-G1
 2,000 PCS
 Lot No. _____
 FUMIWA TECHNICAL CO., LTD.

Type	A	B	C	D	Q'ty/Reel
FAT3232	330 \pm 1.5	75 \pm 2.0	18 \pm 0.5	13 \pm 0.5	2,000

Note:

1. Please make sure that your product is has been evaluated and confirmed against your specifications when our product is mounted to your product.
2. Do not knock nor drop.
3. All the items and parameters in this product specification have been prescribed on the premise that our product is used for the purpose, under the condition and in the environment agreed upon between you and us. You are requested not to use our product deviating from such agreement.
4. Please keep the distance between transformer/coil and other components (refer to the standard IEC 950)